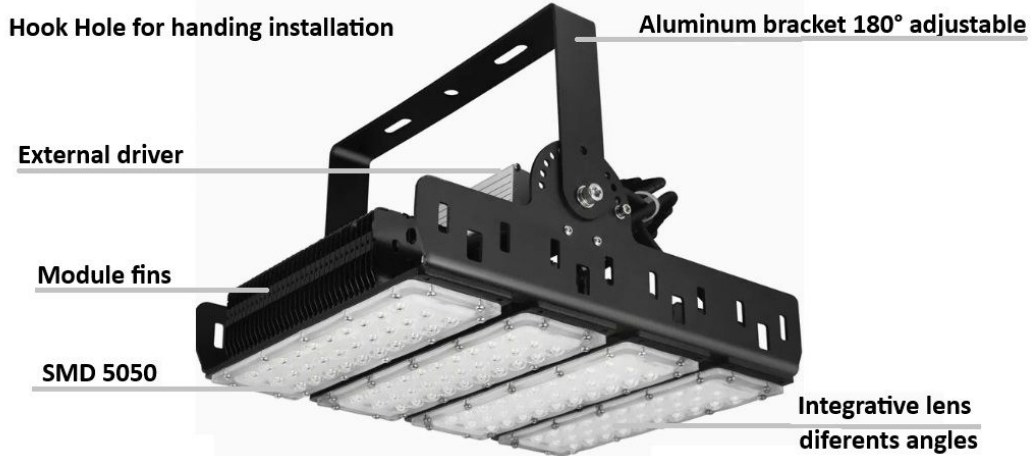
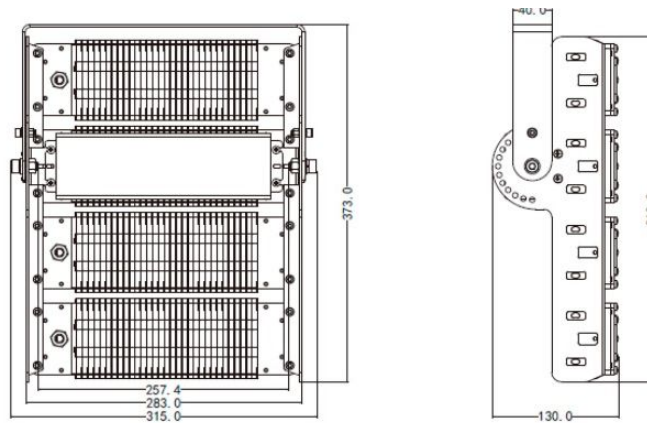


Main Technical Parameters:

Input voltage	100-277V AC 50/60Hz	
LED spec.	Lumileds SMD5050	
Power consumption	200W	
Driver	MOSO	
Lumens	36000 lm	
CCT	warm white	2700K / 3000K
	Natural white	4000K
	Day white	5000K
	Cold white	5700K / 6500K
Color Rendering Index(CRI)	Ra>80	
Power factor	>0.95	
Materials	Die casting aluminum + optical lens	
Beam angle	30° / 60° / 90° / 80*140°	
Dimmable option	1-10V,PWM, resistance,Dali	
Working Temperature	-35°C ~ +55°C	
IP grade	IP65 waterproof	
Net weight	5.4/kg	
LED life	50,000 hrs	
Warranty	5 years CE approval	
Appllication	Stadium,tunnel, sport court,airport,Mine,wharf, sqaure,street,warehouse, factory,parking lot,hall	



Dimension(mm):



1, Golon module flood light is compact & lighter 30% than the similar LED products on the market. Easier installation & save more freight cost.

2, With great quality Meanwell driver, 5 years warranty.

3, With Die casting aluminum heat sink black body, better heat dissipation, see light only.

4, Streamline shape and nice appearance;

5, Adopt High performance Lumileds SMD50 LEDs, low light decay and high RA LED chipset, light color uniform & 30° / 60° / 90° / 80*140° beam angle option for different applications.

6, IP66 waterproof for indoor / outdoor lighting applications.

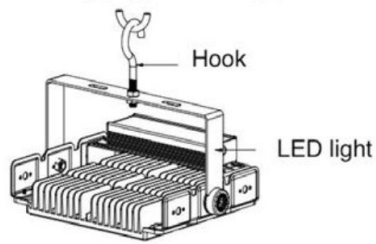
Package:

1pc/carton

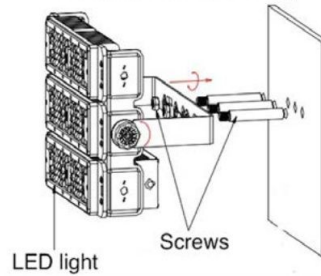
G.W.: 4.5Kg/pc

Carton size: 40*38*18cm

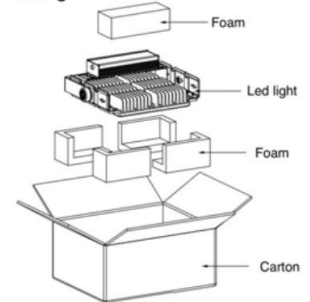
1. Hanging mounting



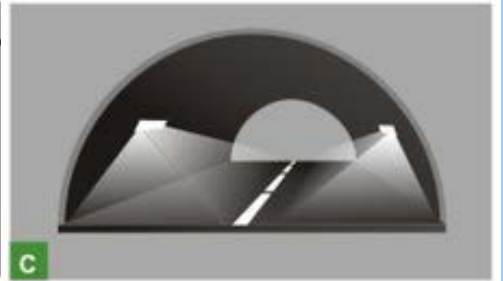
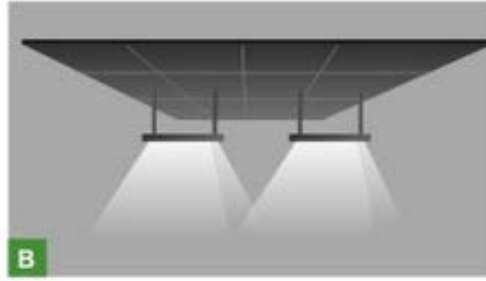
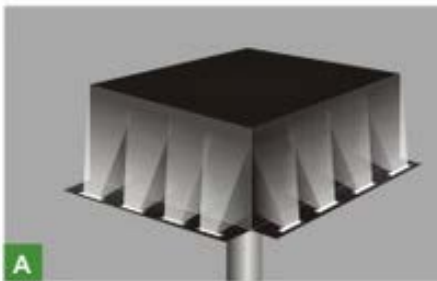
2. bracket mounting



Package



Application:



Note:

- * Don't take the LED lamp apart;
- * Recommend indoor or outdoor use; 5 years warranty;
- * The LED lamp must work under the right voltage according to the specification;
- * Not suitable for dimmers or electronic switches or remote controls;
- * Application in enclosed fixtures may speed up lumen depreciation and shorten lamp life.